

Solicitation Number: 2021-018-IFB Addendum Number: 1

Passenger Channelization

Due Date and Time: January 26, 2021 at 1:59 pm Arizona time

The following questions were received in writing prior to the deadline:

Q1 - There is a material supplier that has an alternative concrete barrier. Would the attached concrete barrier be acceptable to PMGAA?

A1 - The concrete barrier is acceptable. Alternative concrete barrier drawing/specifications that were submitted by Bidder for Question 1 are attached herein and made part of this Addendum 1.

Q2 - Procurement time on 93EA concrete barriers can be up to 16 weeks based on conversations with suppliers. The solicitation allows the owner 75 days to accept the proposal and the solicitation indicates the work is supposed to be completed in April of 2021. With the time allowed for PMGAA to accept the proposal and the lead time to produce the barriers, will PMGAA consider revising the completion time to end of August as a worst case scenario?

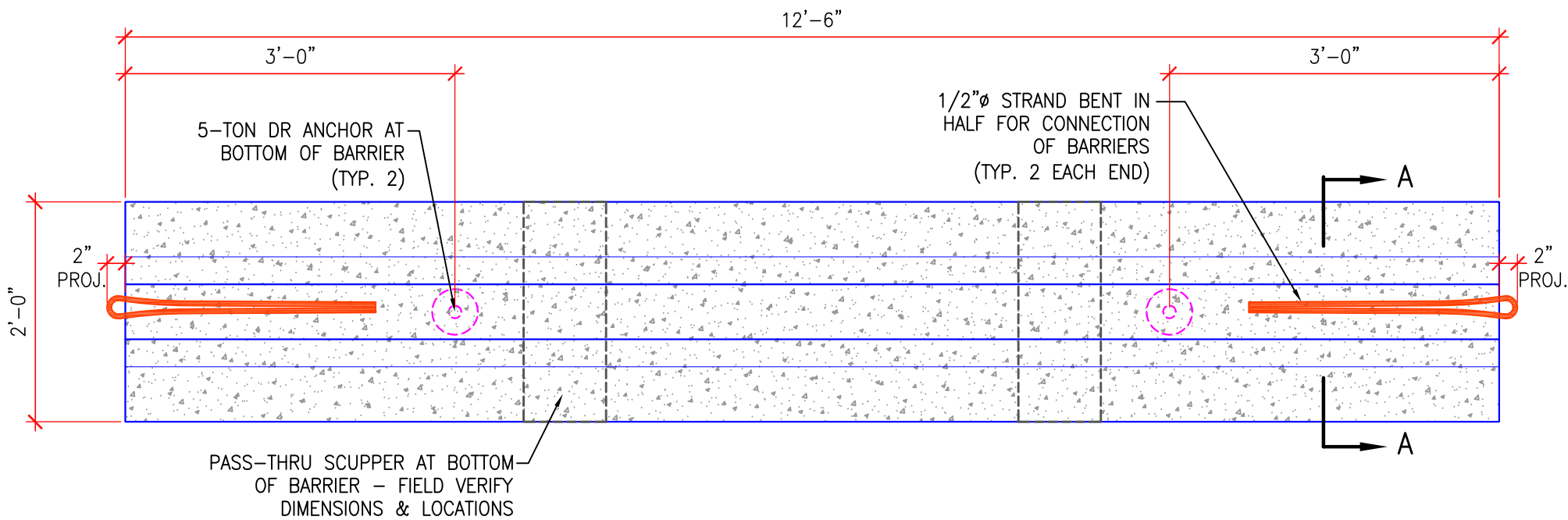
A2 - The time frame for holding bids is to allow the Airport to place before the Board of Directors for approval. Once approved, the contract will proceed with any documented lead times necessary for procurement.

ALL OTHER PROVISIONS OF THE SOLICITATION SHALL REMAIN IN THEIR ENTIRETY.

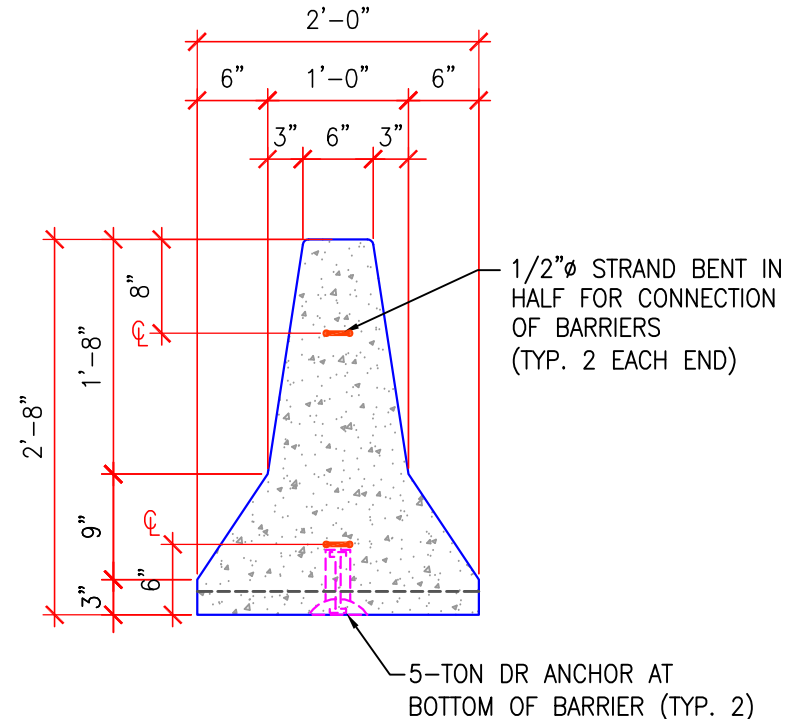
The above referenced Solicitation Addendum is hereby executed January 20, 2021 at
Phoenix Mesa Gateway Airport Authority, Mesa, Arizona.

Marian Whilden

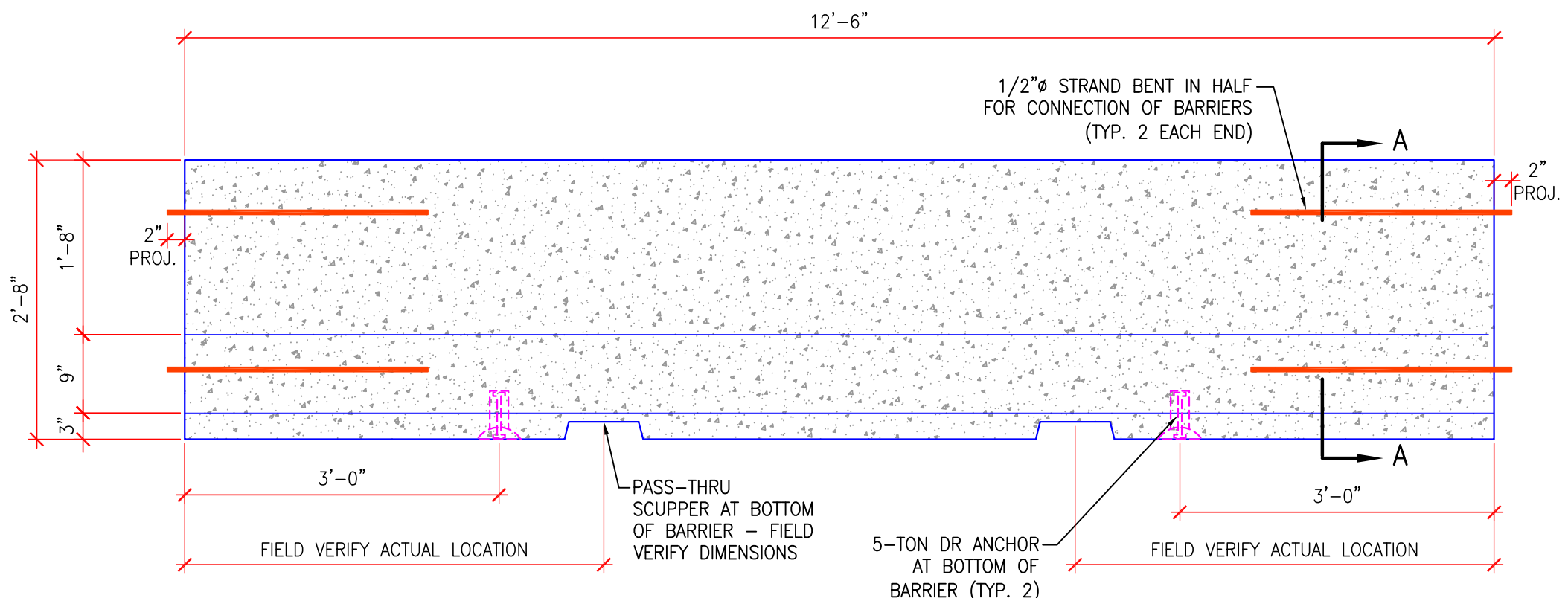
Procurement Coordinator
Phoenix-Mesa Gateway Airport Authority



PLAN VIEW



SECTION A-A VIEW



SIDE VIEW

PRELIMINARY DRAWING – NOT FOR PRODUCTION.
 DESIGN LOAD: H-20 TRAFFIC WITH 13 INCHES TO 4 FEET OF EARTH COVER.
 WATER TABLE: ASSUMED TO BE BELOW BOTTOM OF STRUCTURE.
 FOR COMPLETE DESIGN AND PRODUCT INFORMATION CONTACT JENSEN PRECAST.

CONC. WEIGHT:	4,684 LBS	CONC. VOLUME:	1.17 CY
---------------	-----------	---------------	---------

PROJECT 12'-6" X 2' X 2'-8" (NOMINAL DIMENSIONS) TEMPORARY WALL BARRIER – LAYOUT STANDARD DRAWING		 2410 W BROADWAY RD. PHOENIX, AZ 85040 PHONE: 602-268-0228 FAX: 602-243-5950 www.jensenprecast.com		
ORG. DATE	SCALE	DRAWN	SHEET	PART NUMBER
10/14/13	1/2"=1'-0"	RA	1 OF 2	TMB126
<small>Copyright Information ©2013 Jensen Precast All Rights Reserved. All materials appearing as Jensen Precast documents and the like are proprietary work product and are protected under U.S. copyright and other laws. Unless in conjunction with business conducted with Jensen Precast, any use of Jensen Precast work product without express, written consent is prohibited and recipient is prohibited from distributing any and all work product to non-approved third parties under penalty of civil action.</small>				

CUSTOMER APPROVAL	
SIGNATURE	DATE

THIS DOCUMENT AND THE DATA DERIVED HEREIN OR HEREWITH IS NOT TO BE REPRODUCED, USED OR DISCLOSED, IN WHOLE OR IN PART, BY ANYONE WITHOUT THE WRITTEN PERMISSION OF JENSEN PRECAST

PHX-DC-001\SHARING\SALES TEAM\04 STANDARD DRAWINGS\04-HIGHWAY\TMB126.DWG LAST MODIFIED: 10/14/2013 1:05 PM